

Colchester Borough Council Chief Executive
PAMELA DONNELLY

PA
Julie Hunt

Executive Director Place

LINDSAY BARKER

PA
Yvonne Townsend

- Place Services - Planning; Housing; Transport; Sustainability; Economic Development
- Client function for all Council-owned companies, Colchester Borough Homes and North Essex Garden Communities
- Communities

Assistant Director - Communities

LUCIE BREADMAN

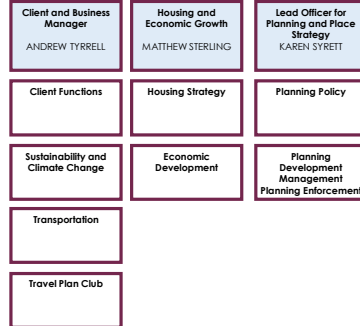
PA
Katie Edwards/Jessica Philp



Assistant Director - Place and Client Services

MANDY JONES

PA
Victoria Hanley



Chief Operating Officer

RICHARD BLOCK

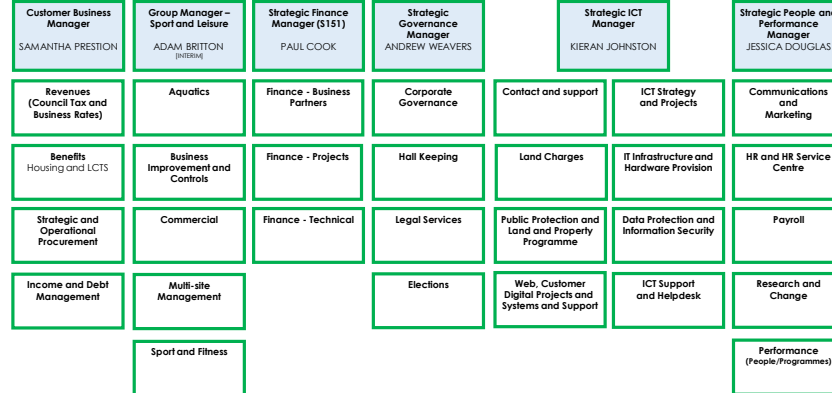
PA
Maile Smith / Margaret Mulvey

- Budget Strategy and Medium Term Financial Planning
- Corporate and Improvement Services
- Performance management and improvement planning
- Borough-wide Operational and Zone-based services
- Parking Partnership (NEPP)
- Environment

Assistant Director – Corporate and Improvement Services

[VACANT]

PA
Maile Smith



Assistant Director - Environment

RORY DOYLE

PA
Louise Cox



Managing Director
PAUL SMITH

PA
Antonia Culler

Finance Manager and Company Secretary
ABBIE GOUGH

Senior Commercial Manager
ALISTAIR WILSON



Colchester
COMMERCIAL HOLDINGS

CCH is not a trading company but provides the senior management for its three subsidiary trading companies – Amphora Trading, Amphora Homes and Amphora Energy. The three subsidiary trading companies became effective from 2 January 2018, and staff TUPE'd across on 1 April 2018. Sport and Leisure services are also currently being managed by CCH's senior management.